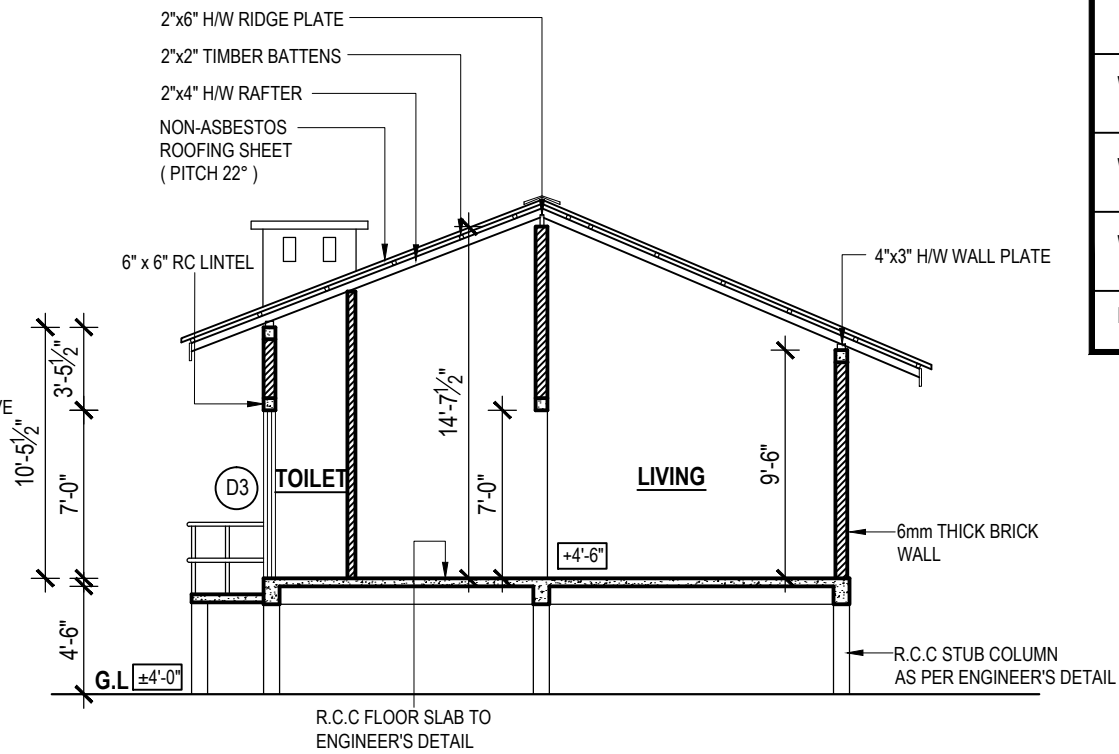
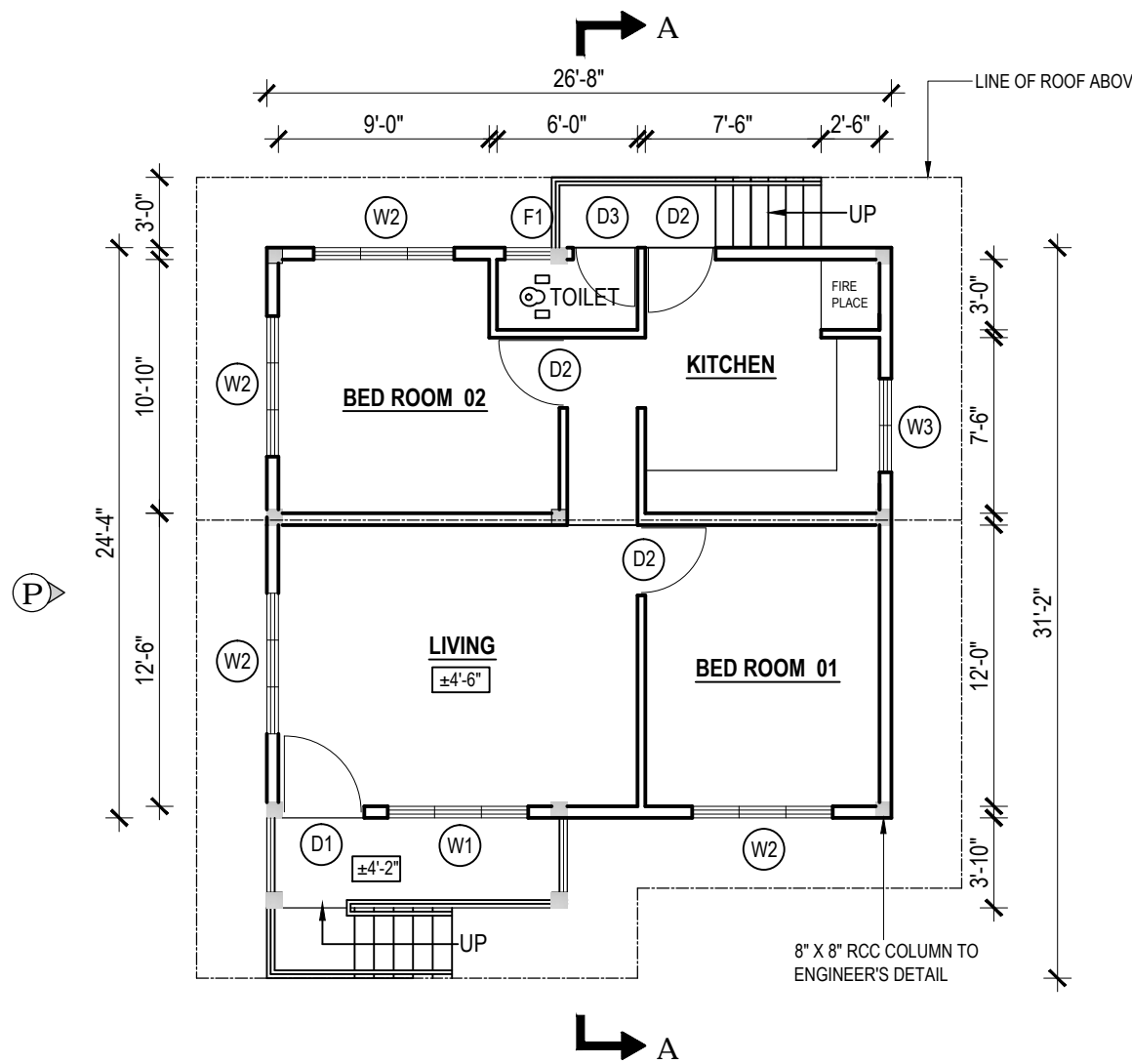


FRONT ELEVATION

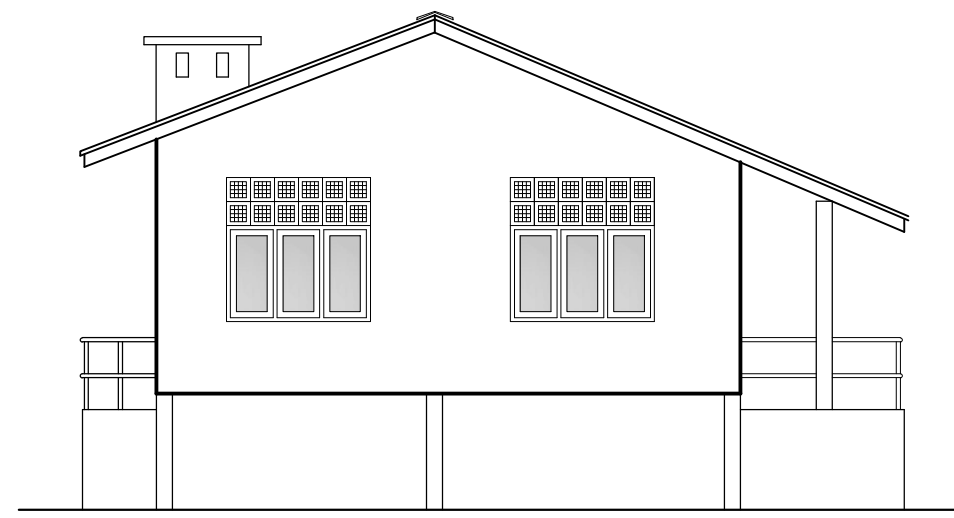


SECTION A - A

SCHEDULE OF DOORS & WINDOWS				
TYPE	SIZE	SILL HT.	DESCRIPTION	NOS
D1	3'-6" x 9'-0"	-	CONCRETE FRAMED TIMBER DOOR (2' HIGH CEMENT GRILL AT TOP)	01
D2	3'-0" x 7'-0"	-	CONCRETE FRAMED TIMBER DOOR	03
D3	2'-9" x 7'-0"	-	CONCRETE FRAMED TIMBER DOOR	01
W1	6'-0" x 7'-0"	2'-0"	CONCRETE FRAMED GLAZED WINDOW (2' HIGH CEMENT GRILL AT TOP)	01
W2	6'-0" x 6'-0"	3'-0"	CONCRETE FRAMED GLAZED WINDOW (2' HIGH CEMENT GRILL AT TOP)	04
W3	4'-0" x 6'-0"	3'-0"	CONCRETE FRAMED GLAZED WINDOW (2' HIGH CEMENT GRILL AT TOP)	01
F1	2'-0" x 2'-0"	7'-0"	CEMENT GRILL	01



FLOOR PLAN



SIDE ELEVATION - P

IMPORTANT NOTES:

1. THIS DRAWING REFERS TO A HYPOTHETICAL SITUATION
2. THE DRAWING SHALL BE USED ONLY AS A GUIDE AND ALTERED TO SUIT A GIVEN LOCATION AND STATUTORY REQUIREMENTS
3. HOUSE SHALL BE LAID ALONG EAST-WEST AS PREFERRED ORIENTATION
4. EXTERNAL AND INTERNAL WALLS ARE 6" AND 4" THICK CEMENT BLOCKWORK RESPECTIVELY

FLOOR AREA - 648 SQ.FT.

PROJECT TITLE : PROPOSED FLOOD RESILIENT MODEL HOUSE TYPE - 01	DRAWING TITLE : ARCHITECTURAL DRAWING	SCALE : 8 FEET TO AN INCH	DRAWN	MSN	PREPARED BY : NATIONAL BUILDING RESEARCH ORGANISATION HUMAN SETTLEMENTS PLANNING AND TRAINING DIVISION
			CHECKED		
			APPROVED		
			DATE	30.05.2017	
			DRAWING NO.	NBRO/FLOOD/AD/01/001	

