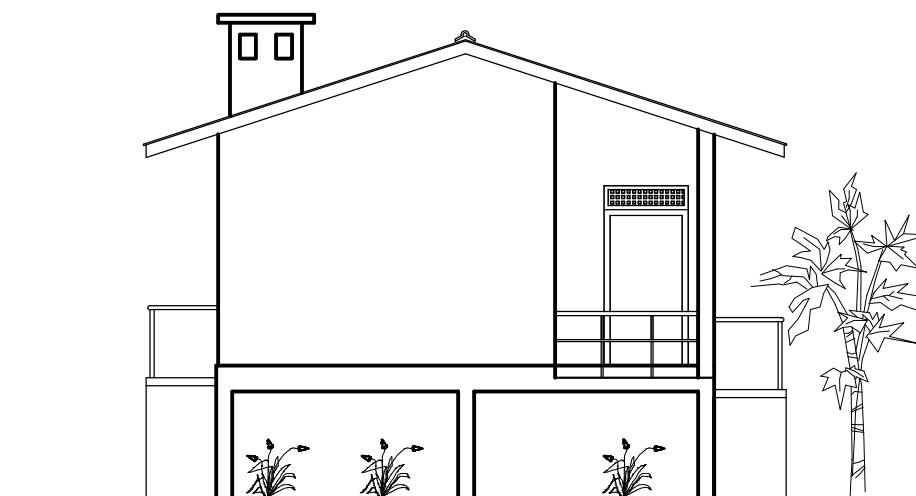
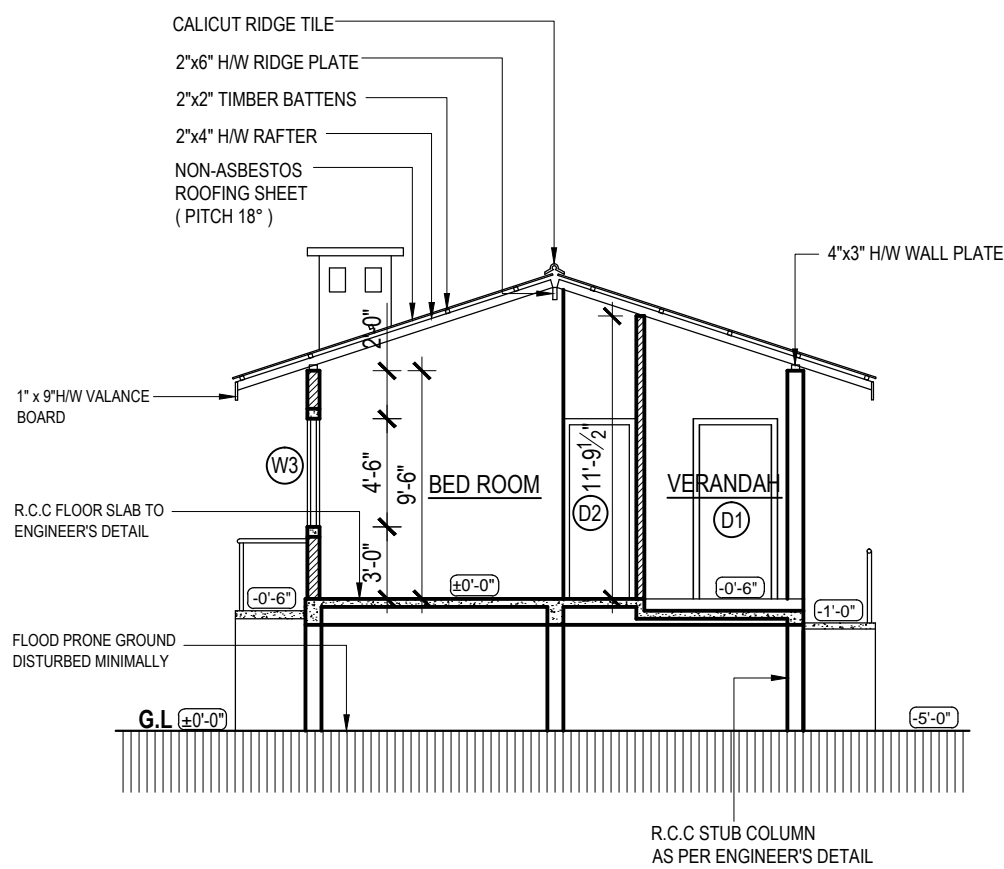
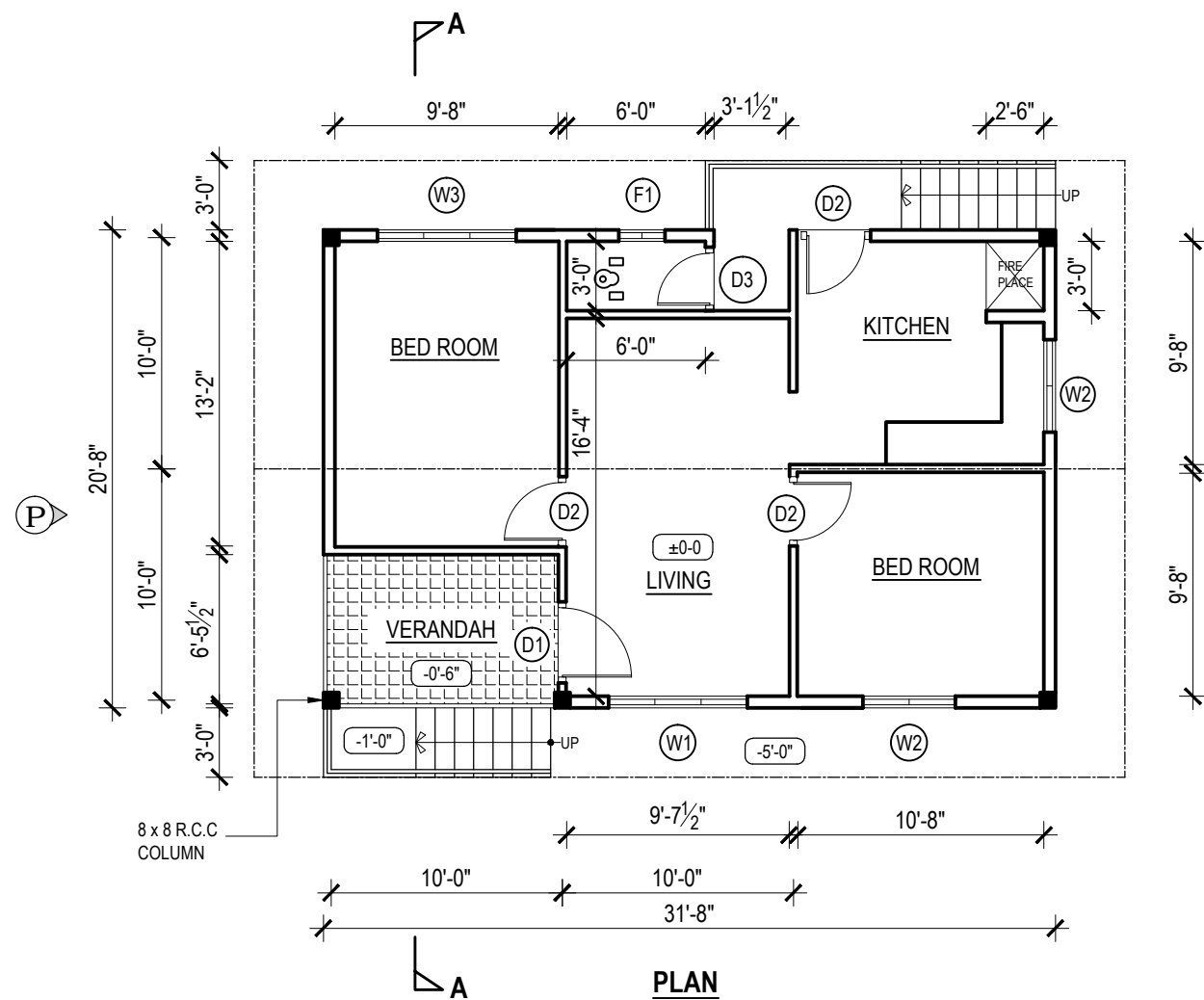


**FRONT ELEVATION**



**SIDE ELEVATION - P**

SCHEDULE OF DOORS & WINDOWS				
TYPE	SIZE	SILL HT.	DESCRIPTION	NOS
D1	3'-6" x 7'-6"	-	CONCRETE FRAMED TIMBER DOOR (1' HIGH CONCRETE LOUVER AT TOP)	01
D2	3'-0" x 6'-6"	-	CONCRETE FRAMED TIMBER DOOR	03
D3	2'-9" x 6'-6"	-	CONCRETE FRAMED TIMBER DOOR	01
W1	6'-0" x 6'-6"	1'-0"	CONCRETE FRAMED GLAZED WINDOW (1' HIGH CONCRETE LOUVER AT TOP)	01
W2	4'-0" x 4'-6"	3'-0"	CONCRETE FRAMED GLAZED WINDOW (1' HIGH CONCRETE LOUVER AT TOP)	02
W3	6'-0" x 4'-6"	3'-0"	CONCRETE FRAMED GLAZED WINDOW (1' HIGH CONCRETE LOUVER AT TOP)	01
F1	2'-0" x 1'-6"	5'-0"	CONCRETE LOUVER	01



**IMPORTANT NOTES:**

1. THIS DRAWING REFERS TO A HYPOTHETICAL SITUATION
2. THE DRAWING SHALL BE USED ONLY AS A GUIDE AND ALTERED TO SUIT A GIVEN LOCATION AND STATUTORY REQUIREMENTS
3. HOUSE SHALL BE LAID ALONG EAST-WEST AS PREFERRED ORIENTATION
4. EXTERNAL AND INTERNAL WALLS ARE 6" AND 4" THICK CEMENT BLOCKWORK RESPECTIVELY

FLOOR AREA - 654 SQ.FT.

PROJECT TITLE : PROPOSED FLOOD RESILIENT MODEL HOUSE TYPE - 02	DRAWING TITLE : <b>ARCHITECTURAL DRAWING</b>	SCALE : 8 FEET TO AN INCH	DRAWN	MSN	PREPARED BY : <b>NATIONAL BUILDING RESEARCH ORGANISATION</b> HUMAN SETTLEMENTS PLANNING AND TRAINING DIVISION
			CHECKED		
			APPROVED		
			DATE	30.05.2017	
			DRAWING NO.	NBRO/FLOOD/AD/02/001	

