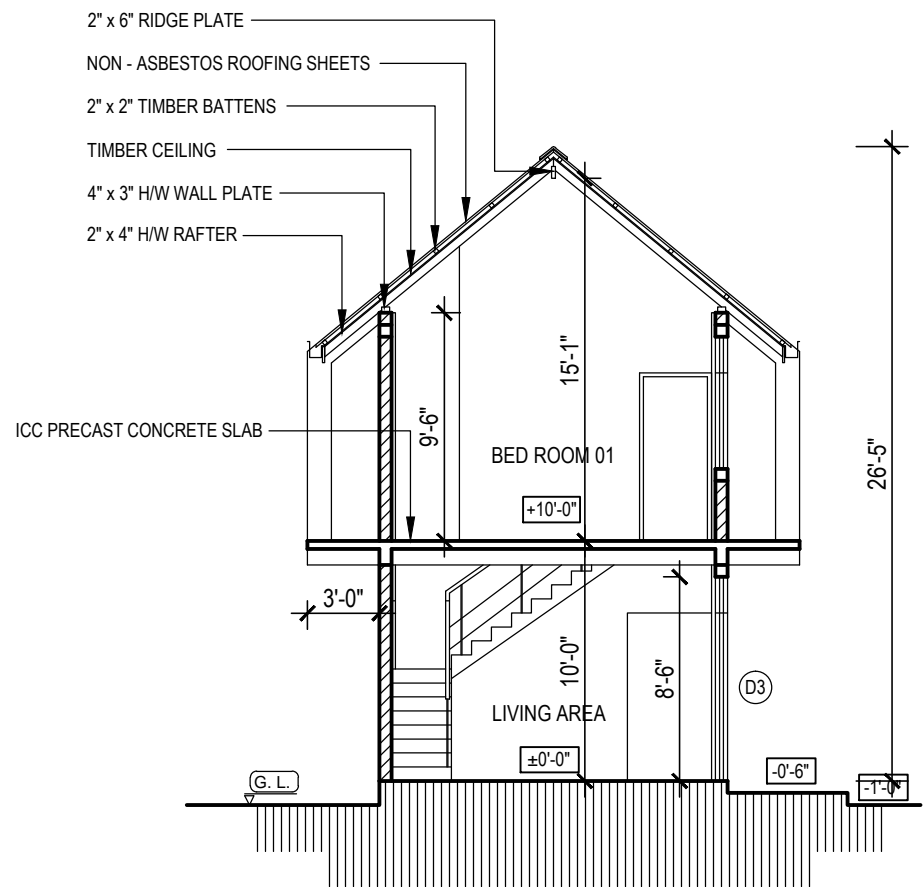
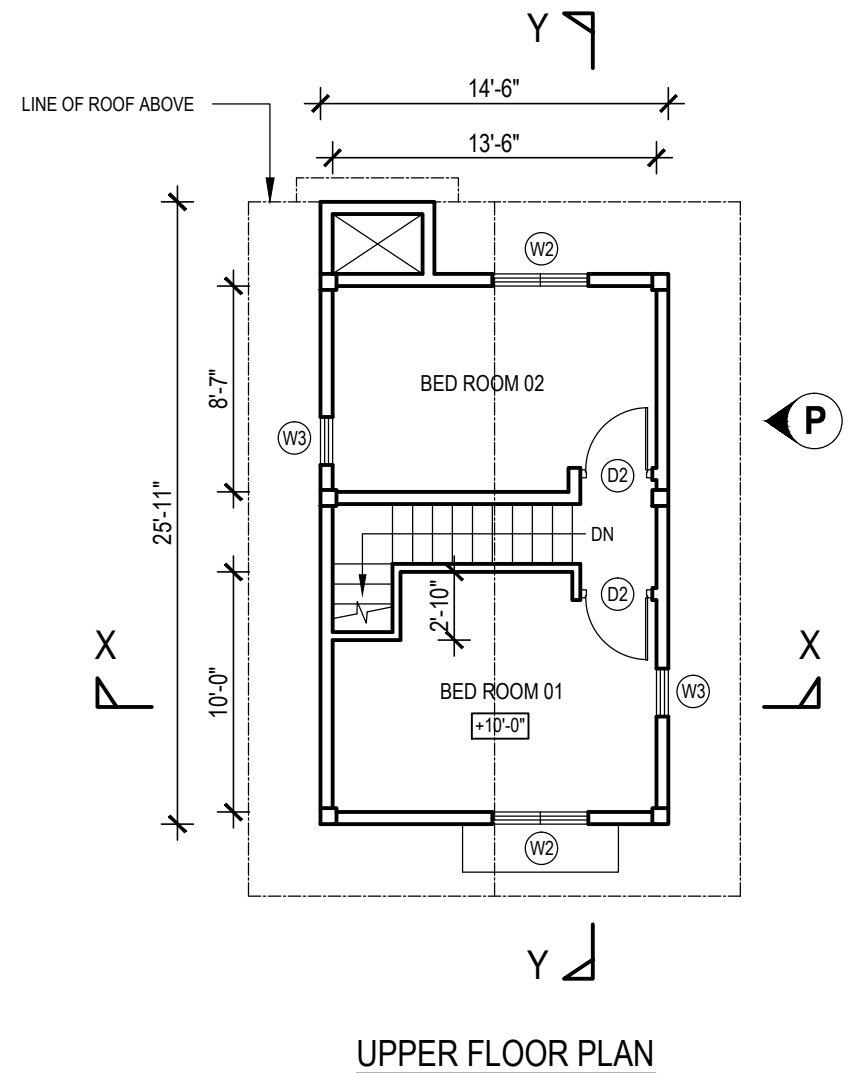
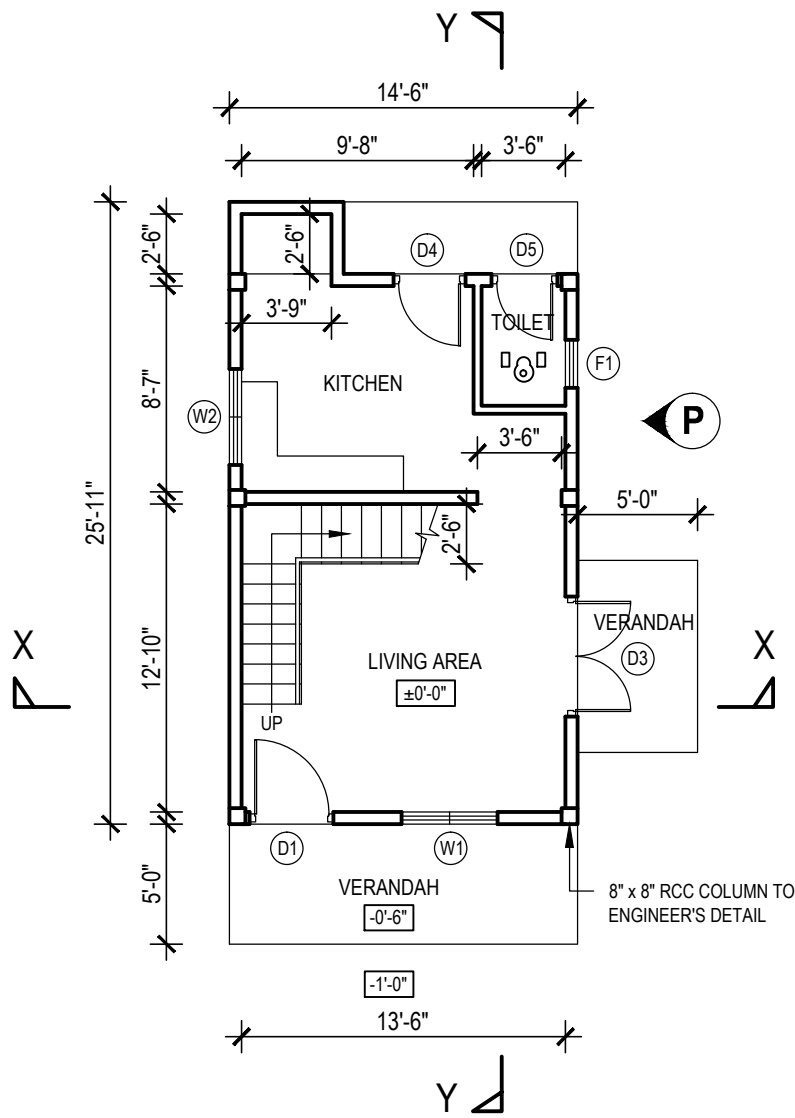


SCHEDULE OF DOORS & WINDOWS

TYPE	SILL HT.	SIZE	DESCRIPTION	NOS
D1	-	3'-6" x 8'-6"	CONCRETE FRAMED TIMBER DOOR WITH 1'-6" HIGH LOUVER AT TOP	1
D2	-	3'-0" x 7'-0"	CONCRETE FRAMED TIMBER DOOR	2
D3	-	5'-0" x 8'-6"	CONCRETE FRAMED TIMBER DOOR WITH 1'-6" HIGH LOUVER AT TOP	1
D4	-	4'-0" x 8'-6"	CONCRETE FRAMED TIMBER DOOR WITH 1'-6" HIGH LOUVER AT TOP	1
D5	-	2'-9" x 7'-0"	CONCRETE FRAMED TIMBER DOOR	1
W1	1'-9"	4'-0" x 6'-9"	CONCRETE FRAMED GLAZED WINDOW WITH 1'-6" HIGH LOUVER AT TOP	1
W2	3'-0"	4'-0" x 5'-6"	-DO-	3
W3	3'-0"	2'-0" x 5'-6"	-DO-	2
F1	5'-0"	2'-0" x 3'-6"	CONCRETE FRAMED LOUVER FAN LIGHT	1



FLOOR AREA - 646 SQ.FT.
 GROUND FLOOR - 346 SQ.FT.
 UPPER FLOOR - 300 SQ.FT.
 (APPROX. ESTIMATION FOR MATERIAL - Rs.Mn)

IMPORTANT NOTES:

1. THIS DRAWING REFERS TO A HYPOTHETICAL SITUATION
2. THE DRAWING SHALL BE USED ONLY AS A GUIDE AND ALTERED TO SUIT A GIVEN LOCATION AND STATUTORY REQUIREMENTS
3. HOUSE SHALL BE LAID ACCORDING TO THE DIMENSIONS OF THE SELECTED SITE.
4. EXTERNAL AND INTERNAL WALLS ARE 6" AND 4" THICK CEMENT BLOCK WORK RESPECTIVELY
5. ALL FOUNDATIONS, BEAMS, ETC. SHOULD BE DONE AS PER ENGINEERS' INSTRUCTIONS.

PROJECT TITLE : FLOOD RESILIENT HOUSE TYPE - 04	DRAWING TITLE : ARCHITECTURAL DRAWING	SCALE : 8 FEET TO AN INCH	DRAWN	MSN	PREPARED BY : NATIONAL BUILDING RESEARCH ORGANISATION HUMAN SETTLEMENTS PLANNING AND TRAINING DIVISION
			CHECKED		
			APPROVED		
			DATE	30.05.2017	
			DRAWING NO.	NBRO/FLOOD/AD/04/001	

