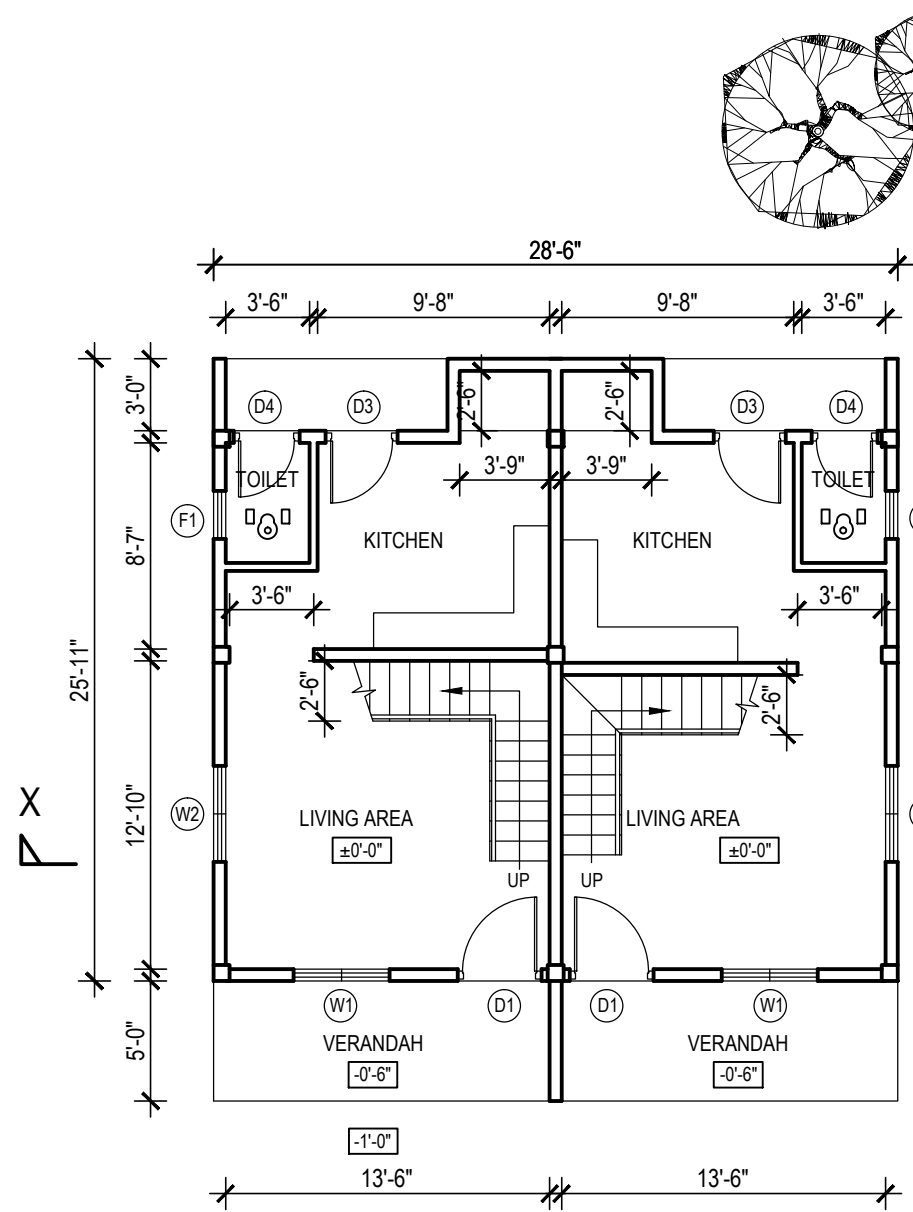
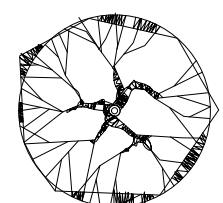


SCHEDULE OF DOORS & WINDOWS

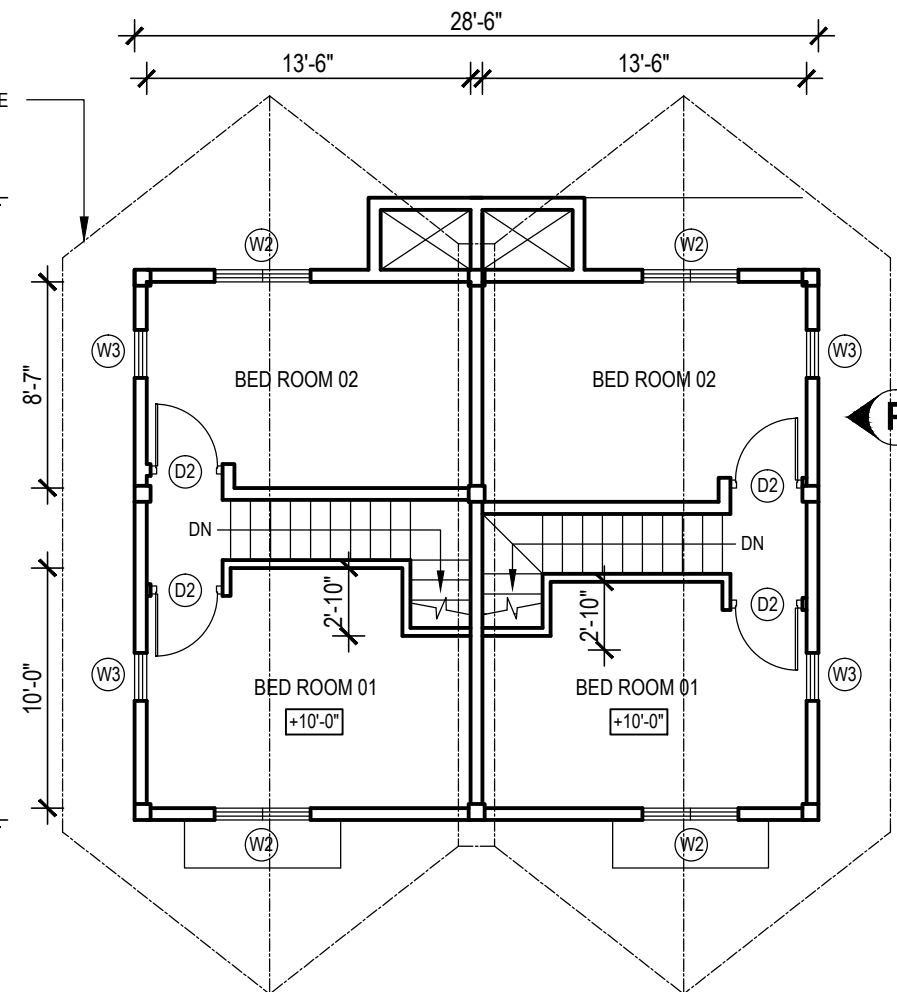
TYPE	SILL HT.	SIZE	DESCRIPTION	NOS
D1	-	3'-6" x 8'-6"	CONCRETE FRAMED TIMBER DOOR WITH 1'-6" HIGH LOUVER AT TOP	2
D2	-	3'-0" x 7'-0"	CONCRETE FRAMED TIMBER DOOR	4
D3	-	3'-0" x 8'-6"	CONCRETE FRAMED TIMBER DOOR WITH 1'-6" HIGH LOUVER AT TOP	2
D4	-	2'-9" x 7'-0"	CONCRETE FRAMED TIMBER DOOR	2
W1	1'-9"	4'-0" x 6'-9"	CONCRETE FRAMED GLAZED WINDOW WITH 1'-6" HIGH LOUVER AT TOP	2
W2	3'-0"	4'-0" x 5'-6"	-DO-	6
W3	3'-0"	2'-0" x 5'-6"	-DO-	4
F1	5'-0"	2'-0" x 3'-6"	CONCRETE FRAMED LOUVER FAN LIGHT	2



GROUND FLOOR PLAN



LINE OF ROOF ABOVE



UPPER FLOOR PLAN

FLOOR AREA - 648 SQ.FT. (X 2 = 1296 SQ.FT.)
 GROUND FLOOR - 340 SQ.FT. (X 2 = 680 SQ.FT.)
 UPPER FLOOR - 308 SQ.FT. (X 2 = 616 SQ.FT.)
 (APPROX. ESTIMATION FOR MATERIAL - Rs.Mn)

IMPORTANT NOTES:

1. THIS DRAWING REFERS TO A HYPOTHETICAL SITUATION
2. THE DRAWING SHALL BE USED ONLY AS A GUIDE AND ALTERED TO SUIT A GIVEN LOCATION AND STATUTORY REQUIREMENTS
3. HOUSE SHALL BE LAID ACCORDING TO THE DIMENSIONS OF THE SELECTED SITE.
4. EXTERNAL AND INTERNAL WALLS ARE 6" AND 4" THICK CEMENT BLOCK WORK RESPECTIVELY
5. ALL FOUNDATIONS, BEAMS, ETC. SHOULD BE DONE AS PER ENGINEERS' INSTRUCTIONS.

SIGNATURE OF APPLICANT

SIGNATURE OF ARCHITECT/ ENGINEER

PROJECT TITLE :
 FLOOD RESILIENT HOUSE
 TYPE - 05

DRAWING TITLE :
ARCHITECTURAL DRAWING

SCALE :
 8 FEET TO AN INCH

DRAWN	MSN
CHECKED	
APPROVED	
DATE	12.06.2017
DRAWING NO.	NBRO/FLOOD/AD/05/001

PREPARED BY :

NATIONAL BUILDING RESEARCH ORGANISATION
 HUMAN SETTLEMENTS PLANNING AND TRAINING DIVISION

