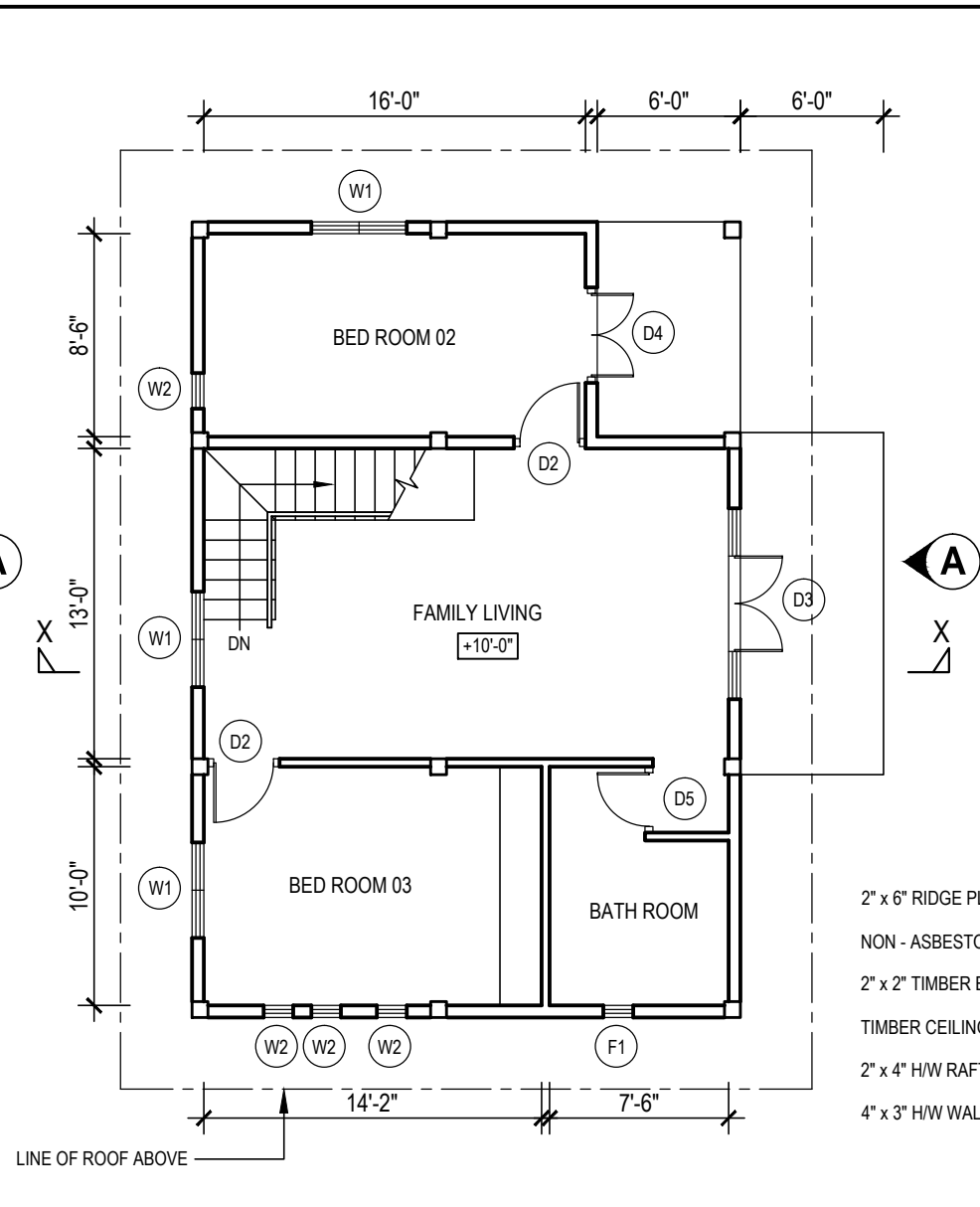


**GROUND FLOOR PLAN**

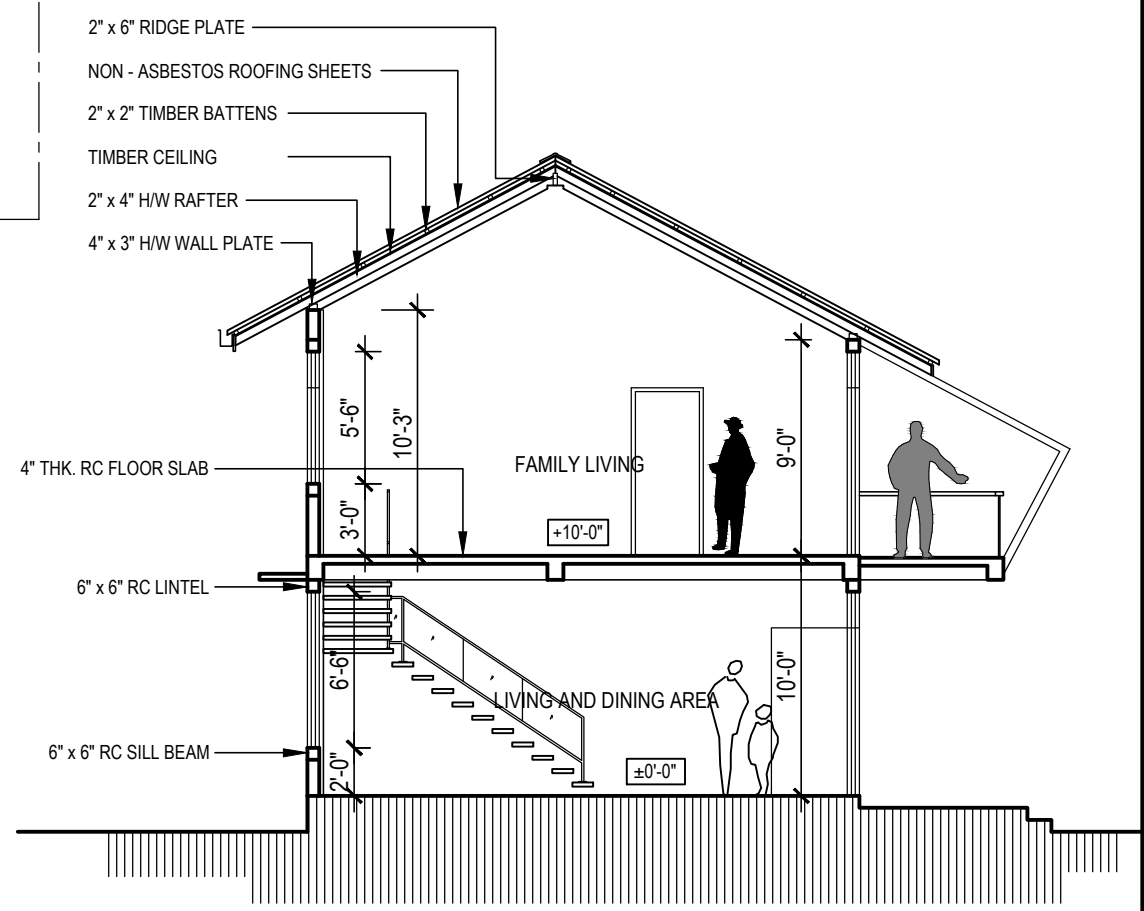


**UPPER FLOOR PLAN**

SCHEDULE OF DOORS & WINDOWS				
TYPE	SILL HT.	SIZE	DESCRIPTION	NOS
D1	-	3'-6" x 8'-6"	CONCRETE FRAMED TIMBER DOOR WITH 1'-6" HIGH LOUVER AT TOP	1
D2	-	3'-0" x 7'-0"	CONCRETE FRAMED TIMBER DOOR	4
D3	-	8'-0" x 8'-6"	CONCRETE FRAMED TIMBER DOOR WITH 1'-6" HIGH LOUVER AT TOP (LOUVER PANELS AT BOTH SIDES)	2
D4	-	4'-0" x 8'-6"	CONCRETE FRAMED TIMBER DOOR WITH 1'-6" HIGH LOUVER AT TOP	1
D5	-	2'-9" x 7'-0"	- DO -	2
W1	3'-0"	4'-0" x 6'-0"	CONCRETE FRAMED GLAZED WINDOW WITH 1'-6" HIGH LOUVER AT TOP	5
W2	2'-0"	1'-9" x 6'-0"	CONCRETE FRAMED LOUVER PANEL	9
F1	5'-6"	1'-9" x 3'-6"	CONCRETE FRAMED LOUVER FAN LIGHT	2

- IMPORTANT NOTES:**
1. THIS DRAWING REFERS TO A HYPOTHETICAL SITUATION
  2. THE DRAWING SHALL BE USED ONLY AS A GUIDE AND ALTERED TO SUIT A GIVEN LOCATION AND STATUTORY REQUIREMENTS
  3. HOUSE SHALL BE LAID ACCORDING TO THE DIMENSIONS OF THE SELECTED SITE.
  4. EXTERNAL AND INTERNAL WALLS ARE 6" AND 4" THICK CEMENT BLOCK WORK RESPECTIVELY
  5. ALL FOUNDATIONS, BEAMS, ETC. SHOULD BE DONE AS PER ENGINEERS' INSTRUCTIONS.

FLOOR AREA - 924 SQ.FT.  
 GROUND FLOOR - 663 SQ.FT.  
 (APPROX. ESTIMATION FOR MATERIAL - Rs.Mn .....)  
 UPPER FLOOR - 666 SQ.FT.



**SECTION X - X**

PROJECT TITLE : TYPE PLAN - 04	DRAWING TITLE : <b>ARCHITECTURAL DRAWING</b>	SCALE : 8 FEET TO AN INCH	DRAWN	MSN	PREPARED BY : <b>NATIONAL BUILDING RESEARCH ORGANISATION</b> HUMAN SETTLEMENTS PLANNING AND TRAINING DIVISION
			CHECKED		
			APPROVED		
			DATE	05.01.2017	
			DRAWING NO.	NBRO/ARANAYAKA/AD/04/001	

